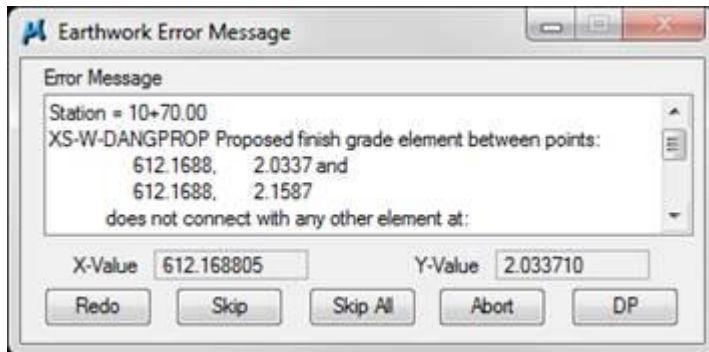


5_12 CROSS SECTIONS NOT READING SURFACE WEDGING QUANTITIES

Question:

I am trying to run the surface inp file to get quantities for my surface. Each time I run the inp file I get errors similar to this:



I DP to the location and try to see what may be wrong and cannot see an error.

Answer:

Wedging does not work when running regular Geopak Earthwork. You have to remove the different wedge topmost lines because they have the tendency to overlap each other therefore giving you the mentioned error message.

For calculating wedging quantities, use Corridor Modeling and the spreadsheet I've developed for pavement quantities. Depending on the specified pavement type, because each type has a conversion factor, their values for volume (Cubic Yard) can be converted to tonnage. The spreadsheet does this automatically and the below link list the conversion factor in a table format.

<https://connect.ncdot.gov/projects/Roadway/layouts/15/listform.aspx?PageType=4&ListId=%7B89DC33D8%2DF5B5%2D47F8%2D81AF%2D88439BF844EE%7D&ID=23&ContentTypeID=0x0100DBC8584DAD873D46BE37F8B4C59907BD>